

New Jersey Semi-Conductor Products, Inc.

20 STERN AVE.
 SPRINGFIELD, NEW JERSEY 07081
 U.S.A.

TELEPHONE: (973) 376-2922
 (212) 227-6005
 FAX: (973) 376-8960

2N6214

**SILICON
 PNP POWER TRANSISTOR**

MAXIMUM RATINGS: ($T_C=25^\circ\text{C}$)	SYMBOL		UNITS
Collector-Base Voltage	V_{CB0}	450	V
Collector-Emitter Voltage	V_{CEX}	450	V
Collector-Emitter Voltage	V_{CER}	425	V
Collector-Emitter Voltage	V_{CEO}	400	V
Emitter-Base Voltage	V_{EBO}	6.0	V
Continuous Collector Current	I_C	2.0	A
Continuous Base Current	I_B	1.0	A
Power Dissipation	P_D	35	W
Power Dissipation ($T_C=100^\circ\text{C}$)	P_D	20	W
Operating and Storage Junction Temperature	T_J, T_{stg}	-65 to +200	$^\circ\text{C}$
Thermal Resistance	θ_{JC}	5.0	$^\circ\text{C/W}$

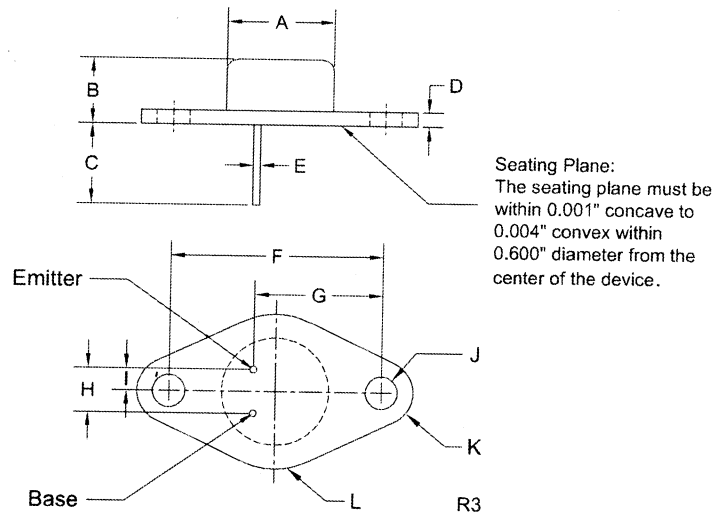
ELECTRICAL CHARACTERISTICS: ($T_C=25^\circ\text{C}$ unless otherwise noted)

SYMBOL	TEST CONDITIONS	MIN	MAX	UNITS
I_{CEV}	$V_{CE}=410\text{V}, V_{EB}=1.5\text{V}$		1.0	mA
I_{CEV}	$V_{CE}=410\text{V}, V_{EB}=1.5\text{V}, T_C=100^\circ\text{C}$		10	mA
I_{CEO}	$V_{CE}=150\text{V}$		5.0	mA
I_{EBO}	$V_{EB}=6.0\text{V}$		0.5	mA
BV_{CEO}	$I_C=200\text{mA}$	400		V
BV_{CER}	$I_C=200\text{mA}, R_{BE}=50\Omega$	425		V
BV_{CEX}	$I_C=200\text{mA}, V_{BE}=1.5\text{V}, R_{BE}=50\Omega$	450		V
BV_{EBO}	$I_B=500\text{mA}$	6.0		V
$V_{CE(SAT)}$	$I_C=1.0\text{A}, I_B=125\text{mA}$		2.5	V
$V_{BE(SAT)}$	$I_C=1.0\text{A}, I_B=125\text{mA}$		1.4	V
h_{FE}	$V_{CE}=5.0\text{V}, I_C=1.0\text{A}$	10	100	
$ h_{fe} $	$V_{CE}=10\text{V}, I_C=200\text{mA}, f=5.0\text{MHz}$	4.0		
C_{ob}	$V_{CB}=10\text{V}, f=1.0\text{MHz}$		220	pF
$I_{s/b}$	$V_{CE}=40\text{V}$	875		mA
t_r	$V_{CC}=200\text{V}, I_C=1.0\text{A}, I_{B1}=I_{B2}=125\text{mA}$		0.6	μs
t_s	$V_{CC}=200\text{V}, I_C=1.0\text{A}, I_{B1}=I_{B2}=125\text{mA}$		2.5	μs
t_f	$V_{CC}=200\text{V}, I_C=1.0\text{A}, I_{B1}=I_{B2}=125\text{mA}$		0.6	μs



Quality Semi-Conductors

TO-66 CASE - MECHANICAL OUTLINE



SYMBOL	INCHES		MILLIMETERS	
	MIN	MAX	MIN	MAX
A (DIA)	0.470	0.500	11.94	12.70
B	0.250	0.340	6.35	8.64
C	0.360	-	9.14	-
D	0.050	0.075	1.27	1.91
E (DIA)	0.028	0.034	0.71	0.86
F	0.956	0.964	24.28	24.48
G	0.570	0.590	14.48	14.99
H	0.190	0.210	4.83	5.33
I	0.093	0.107	2.36	2.72
J (DIA)	0.142	0.152	3.61	3.86
K (RAD)	0.141		3.58	
L (RAD)	0.345		8.76	

TO-66 (REV:R3)