

Silicon NPN Power Transistor

DESCRIPTION

- Collector-Emitter Sustaining Voltage-
 : $V_{CEO(SUS)} = 450V(\text{Min})$
- Fast Switching speed

APPLICATIONS

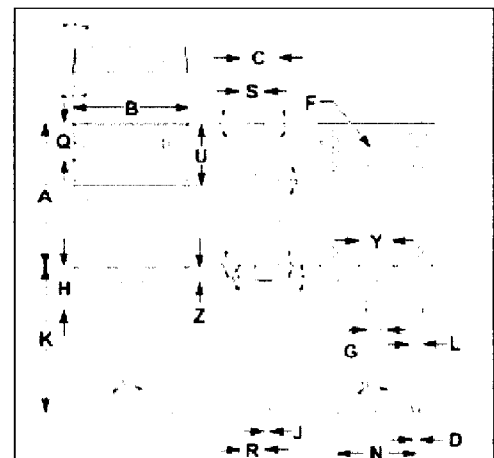
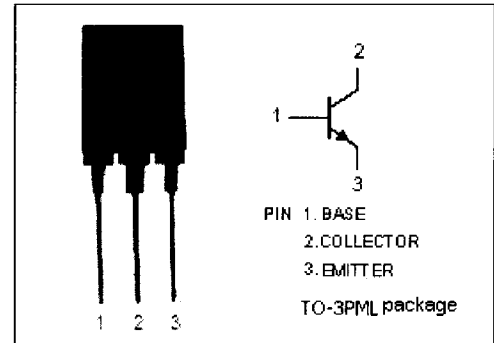
- Designed for power switching applications.

ABSOLUTE MAXIMUM RATINGS($T_a=25^\circ\text{C}$)

SYMBOL	PARAMETER	VALUE	UNIT
V_{CBO}	Collector-Base Voltage	600	V
V_{CEO}	Collector-Emitter Voltage	450	V
V_{CEX}	Collector-Emitter Voltage $V_{EB}=5V$	600	V
V_{EBO}	Emitter-Base Voltage	7	V
I_C	Collector Current-Continuous	10	A
I_{CM}	Collector Current-Peak	20	A
I_B	Base Current-Continuous	4	A
I_{BM}	Base Current-Peak	8	A
P_T	Total Power Dissipation @ $T_C=25^\circ\text{C}$	65	W
T_J	Junction Temperature	150	$^\circ\text{C}$
T_{stg}	Storage Temperature Range	-55~150	$^\circ\text{C}$

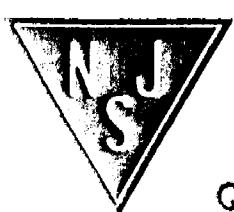
THERMAL CHARACTERISTICS

SYMBOL	PARAMETER	MAX	UNIT
$R_{th\ j-c}$	Thermal Resistance, Junction to Case	1.92	$^\circ\text{C/W}$



DIM	mm	
	MIN	MAX
A	19.90	20.10
B	15.90	16.10
C	5.50	5.70
D	0.90	1.10
F	3.30	3.50
G	2.90	3.10
H	5.90	6.10
J	0.595	0.605
K	22.30	22.50
L	1.90	2.10
N	10.80	11.00
Q	4.90	5.10
R	3.75	3.95
S	3.20	3.40
U	9.90	10.10
Y	4.70	4.90
Z	1.90	2.10

NJ Semi-Conductors reserves the right to change test conditions, parameter limits and package dimensions without notice. Information furnished by NJ Semi-Conductors is believed to be both accurate and reliable at the time of going to press. However, NJ Semi-Conductors assumes no responsibility for any errors or omissions discovered in its use. NJ Semi-Conductors encourages customers to verify that datasheets are current before placing orders.



Silicon NPN Power Transistor

2SC4581

ELECTRICAL CHARACTERISTICS

$T_C=25^\circ\text{C}$ unless otherwise specified

SYMBOL	PARAMETER	CONDITIONS	MIN	TYP.	MAX	UNIT
$V_{CEO(SUS)}$	Collector-Emitter Sustaining Voltage	$I_C=0.2\text{A}; I_B=0$	450			V
$V_{CE(sat)}$	Collector-Emitter Saturation Voltage	$I_C=5\text{A}; I_B=1\text{A}$			1.0	V
$V_{BE(sat)}$	Base-Emitter Saturation Voltage	$I_C=5\text{A}; I_B=1\text{A}$			1.5	V
I_{CBO}	Collector Cutoff Current	At rated Voltage			100	μA
I_{CEO}	Collector Cutoff Current	At rated Voltage			100	μA
I_{EBO}	Emitter Cutoff Current	At rated Voltage			100	μA
h_{FE-1}	DC Current Gain	$I_C=5\text{A}; V_{CE}=5\text{V}$	10			
h_{FE-2}	DC Current Gain	$I_C=1\text{mA}; V_{CE}=5\text{V}$	5			
f_T	Current-Gain—Bandwidth Product	$I_C=1\text{A}; V_{CE}=10\text{V}$		20		MHz

Switching times

t_{on}	Turn-on Time	$I_C=5\text{A}; I_{B1}=1\text{A}; I_{B2}=-2\text{A};$ $R_L=30\Omega; V_{BB2}=4\text{V}$			0.5	μs
t_{stg}	Storage Time				2.0	μs
t_f	Fall Time				0.2	μs