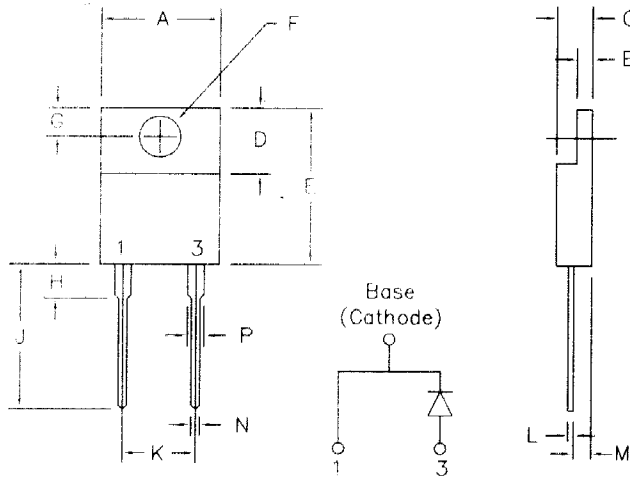


USD635 — USD645



Dim.	inches		Millimeter		Notes
	Minimum	Maximum	Minimum	Maximum	
A	.390	.415	9.91	10.54	
B	.045	.055	1.14	1.40	
C	.180	.190	4.57	4.83	
D	.245	.260	6.22	6.60	
E	.550	.650	13.97	16.51	
F	.139	.155	3.53	3.94	Dia.
G	.100	.120	2.54	3.05	
H	---	.250	---	6.35	
J	.500	.580	12.70	14.73	
K	.190	.210	4.83	5.33	
L	.014	.025	0.35	0.63	
M	.080	.115	2.03	2.92	
N	.028	.038	0.71	0.96	
P	.045	.055	1.14	1.40	

Similar to TO-220AC

Catalog Number	Industry Part Number	Working Peak Reverse Voltage	Repetitive Peak Reverse Voltage
USD635		35V	35V
USD640		40V	40V
USD645		45V	45V

- Schottky Barrier Rectifier
- Guard Ring Protection
- Low Forward Voltage
- 150°C Junction Temperature
- Reverse Energy Tested

Electrical Characteristics			
Average forward current	IF(AV) 6 Amps	TC = 123°C Square wave, RθJC = 2.5°C/W 8.3 ms, half sine, TJ = 150°C f = 1KHZ, 25°C, 1uS Square wave IFM = 6A: TJ = 25°C* IFM = 6A: TJ = 150°C* VRRM, TJ = 25°C VRRM, TJ = 100°C* VR = 5.0V, TJ = 25°C	
Maximum surge current	IF(AV) 225 Amps		
Max repetitive reverse current	IR(OV) 2 Amps		
Max peak forward voltage	VFM .48 Volts		
Typical peak forward voltage	VFM .30 Volts		
Max. peak reverse current	IRM 2 mA		
Typical peak reverse current	IRM 50 mA		
Typical junction capacitance	CJ 575 pF		
* Pulse test: Pulse width 300 μsec, Duty cycle 2%			

Thermal and Mechanical Characteristics		
Storage temperature range	TSTG	-55°C to 150°C
Operating junction temp range	TJ	-55°C to 150°C
Maximum thermal resistance	RθJC	2.5°C/W Junction to Case
Weight		.08 ounces (2.3 grams) typical

